

Deploy easier. Install faster. Power reliably. Reduce footprint. Save money. See why the new Liebert® EXS™ UPS V-Model is the power solution for the new critical IT Edge.

Highlights

The Vertiv™ Liebert® EXS UPS V-Model is an on-line, three-phase (in/out), 208/220V integrated UPS, optimized with a flexible design. Standard configurations offer a reliable and economical power solution in **15, 20, 30 & 40kVA** capacities.

Key Benefits

- Integrated solution supports faster deployments
- Front access design along with top and rear only cable access makes installation and maintenance easy
- Diverse applications scenarios: In-Row, Room and against the wall
- Efficient operation saves energy
- Flexible UPS, power distribution and battery arrangements to meet capacity and runtime demands
- High power factor delivers more usable power
- Intelligent monitoring and management offers improved visibility and control



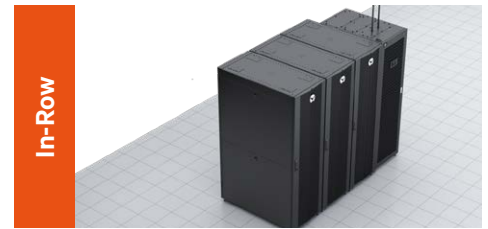
High Availability

Reliable performance and high availability are derived through a proven on-line, double conversion, transformer-free design.

- Integrated Maintenance Bypass ensures critical loads operate even during service
- Short circuit withstand rating up to 30kA
- Temperature compensating battery charger prolongs battery life

Flexible and Optimized Design

The Liebert® EXS UPS V-Model utilizes an optimized tower design to provide reliable power to deliver reliable power in an efficient, flexible and integrated platform. This unit can be configurable for either In-Row or against- the wall server rack applications. The solution ensures the critical UPS, bypass, batteries and distribution elements operate cohesively to power vital systems simply, efficiently and effectively.



Fast, Easy Installation and Serviceability

Pre-assembled, integrated system reduces field work. A pallet ramp offers easy movement. Cable connections and wiring are easily accessible.

Complete Integrated Solution

The UPS solution provides internal battery, maintenance bypass, and optional receptacle distribution in one, simple package.

Runtime Expandability

Achieve your desired runtime by using the standard integrated batteries or elect to choose from external battery options.



EXS-V UPS- 15, 20, 30 & 40kVA

EXS-V External Battery Cabinet (EBC)

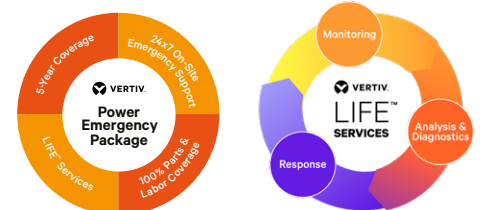


Flexible Monitoring & Management Options

Monitoring adds flexibility to each installation. UNITY and RELAY card compatibility: SNMP, Modbus, environmental sensors. Compatible with Power Insight, Vertiv™ SiteScan®.

Maximum Reliability and Efficiency

Save energy every day. The system operates over 93% in double conversion mode and up to 99% in Eco mode.



UPS Specifications

Power Rating kVA/kW (PF=1)

		15	20	30	40
General Specifications	UPS Technology	On-Line Double Conversion			
Input AC Specification	Input Voltage	208/120, 220/127VAC, 60Hz 3-phase, 4-wire plus ground			
	Frequency Range	40-70Hz			
Output AC Specifications	Voltage	208/120, 220/127VAC, 60Hz 3-phase, 3- or 4-wire plus ground			
	Power Factor	1.0 (Unity)			
	Power Output Distribution Ports	2	2	2	2
Battery Specifications	Battery Technology	Valve-regulated lead acid battery			
	Options	(2) Intellislot™ Ports			
Communications	Card Compatibility	IS-UNITY-DP, IS-UNITY-SNMP, IS-UNITY-LIFE, IS-485EXI, IS-RELAY			
	Protocols Available	MODBUS-IP, MODBUS-485, BACNET-IP, BACNET-MSTP, SNMP, HTTP, LIFE™ Services, Relay Contacts			
Environmental Sensors Options	Liebert® SN Series	Temperature, Humidity, Temperature/Humidity Combination, Contact Closure			
	Dimensions, W x D x H in (mm)*	23.6 39.3x78.7 (600x1000x2000)			
Physical Data UPS	Total Unit Weight lb (kg)	Standard Runtime: 1212 (550)	Standard Runtime: 1212 (550)	1521 (690)	1543 (700)
		Extended Run Time: 1455 (660)	Extended Run Time: 1455 (660)		
	Battery Weight lb (kg)	Standard: 527 (239) Extended: 762.6 (346)	Standard: 527 (239) Extended: 762.6 (346)	762.6 (346)	762.6 (346)
Environmental	Operating Temperature	32-104°F (0-400°C), 68°F to 77°F (20°C to 25°C) for optimum battery life			
	Relative Humidity	5% to 95% non-condensing			
	Operating Altitude	Sea level to 4,921 ft (1,500 m) without derating {Derate Output power by 1% per 328ft (100mm) up to 10,000 ft(3000m)}			
	Acoustical Noise				
Agency/Certification/Conformance		cULus (UL 1778 5th Edition, CSA No.22.2 107.3. Meets current requirements for safe high performance UPS operation. ENERGY STAR qualified			
Standard Warranty		1 year			